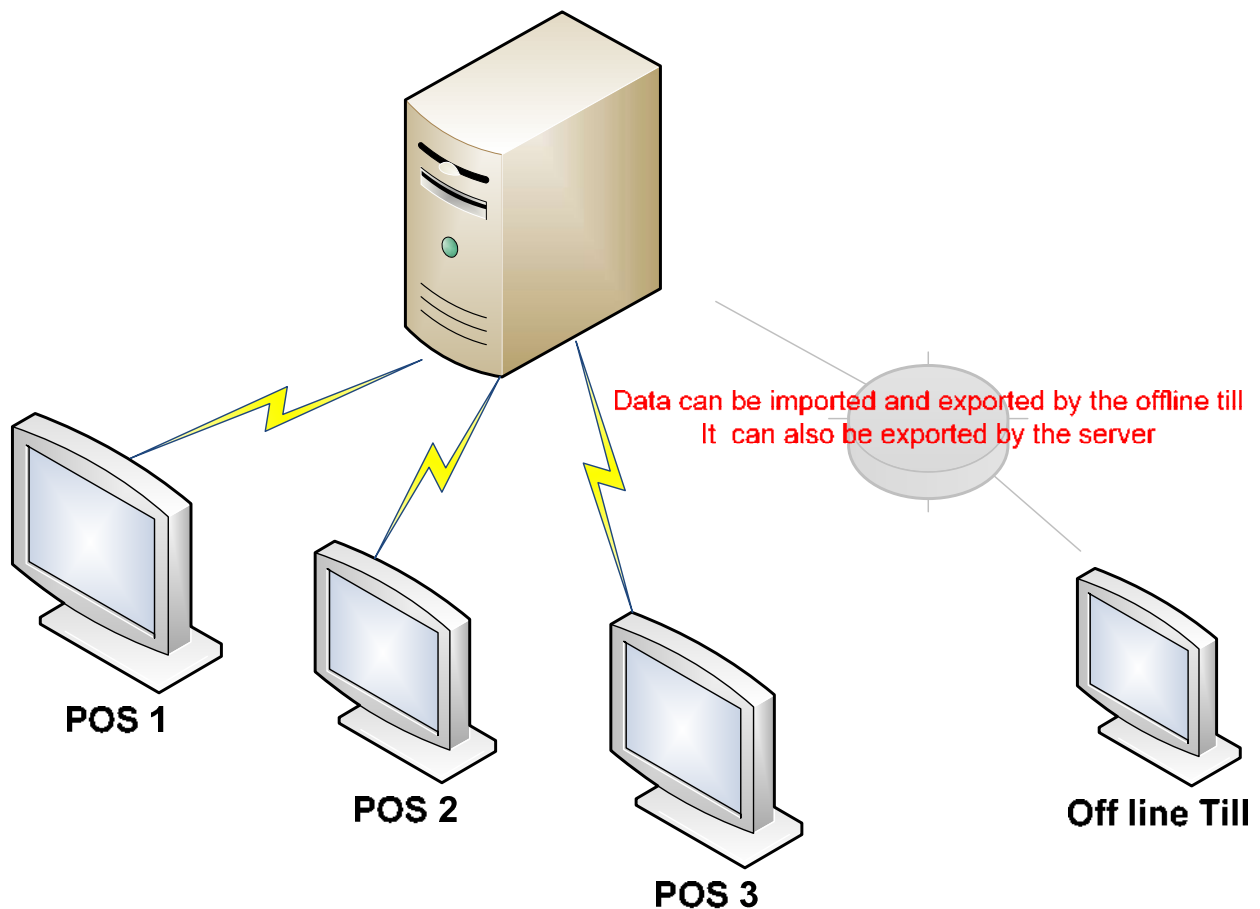


Working on an Offline Till

What is an offline Till?

You can think of an offline till as an independent Point of Sale (POS) with its own database that's not connected to the main server. On the POS terminals that are connected to the main server, data will be automatically transferred from server to the tills and from the tills to the server. For example, if products are defined on the main server, they will automatically appear on the online POS tills.

The offline till, however, works independently. But data can be imported by the offline till from the server, and can also be exported by the server to the offline till.





The offline till works even when the server is down; you can carry out sales on the independent till and later transfer them to the main sever by using automatic or manual sale transfer utility.

Transfer of data between the Server and the Offline Till

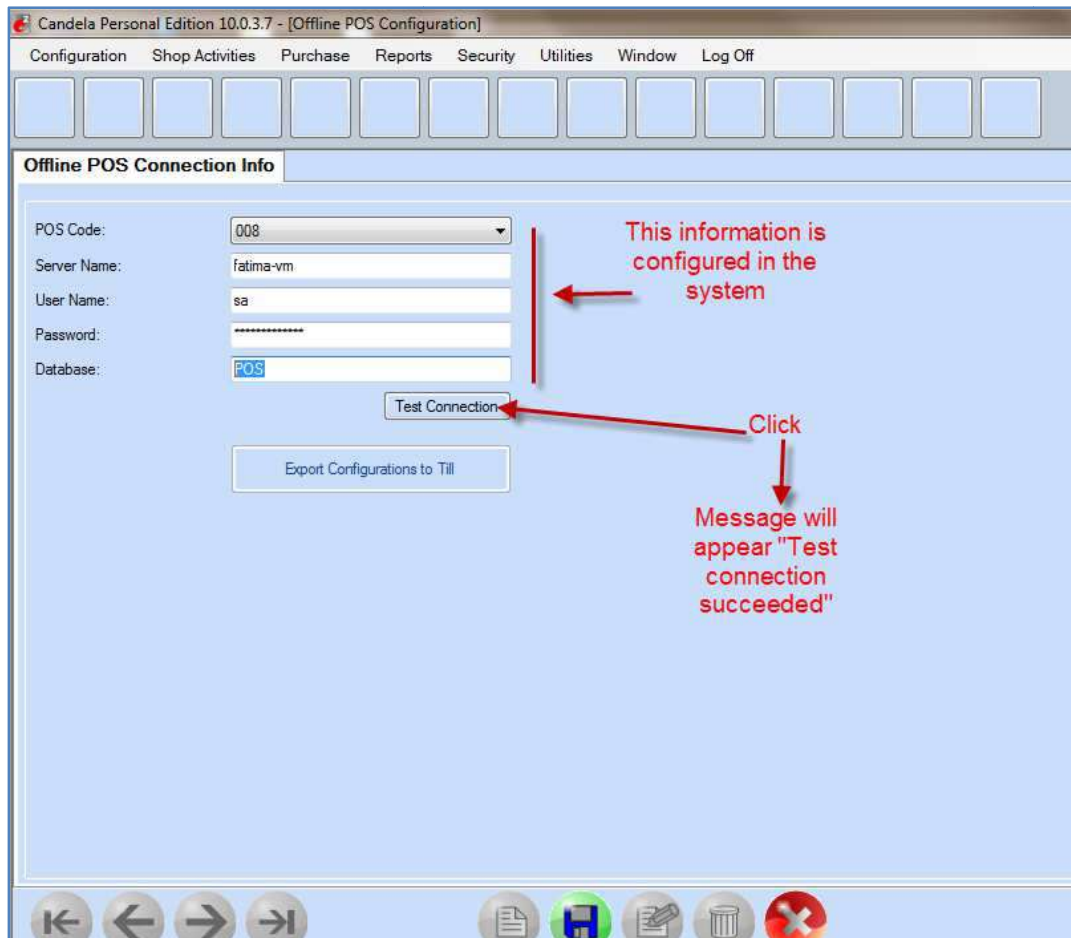
Data transfer between the server and the offline till can be done in two ways:

1. From Server to the offline till
2. From offline till to the main server

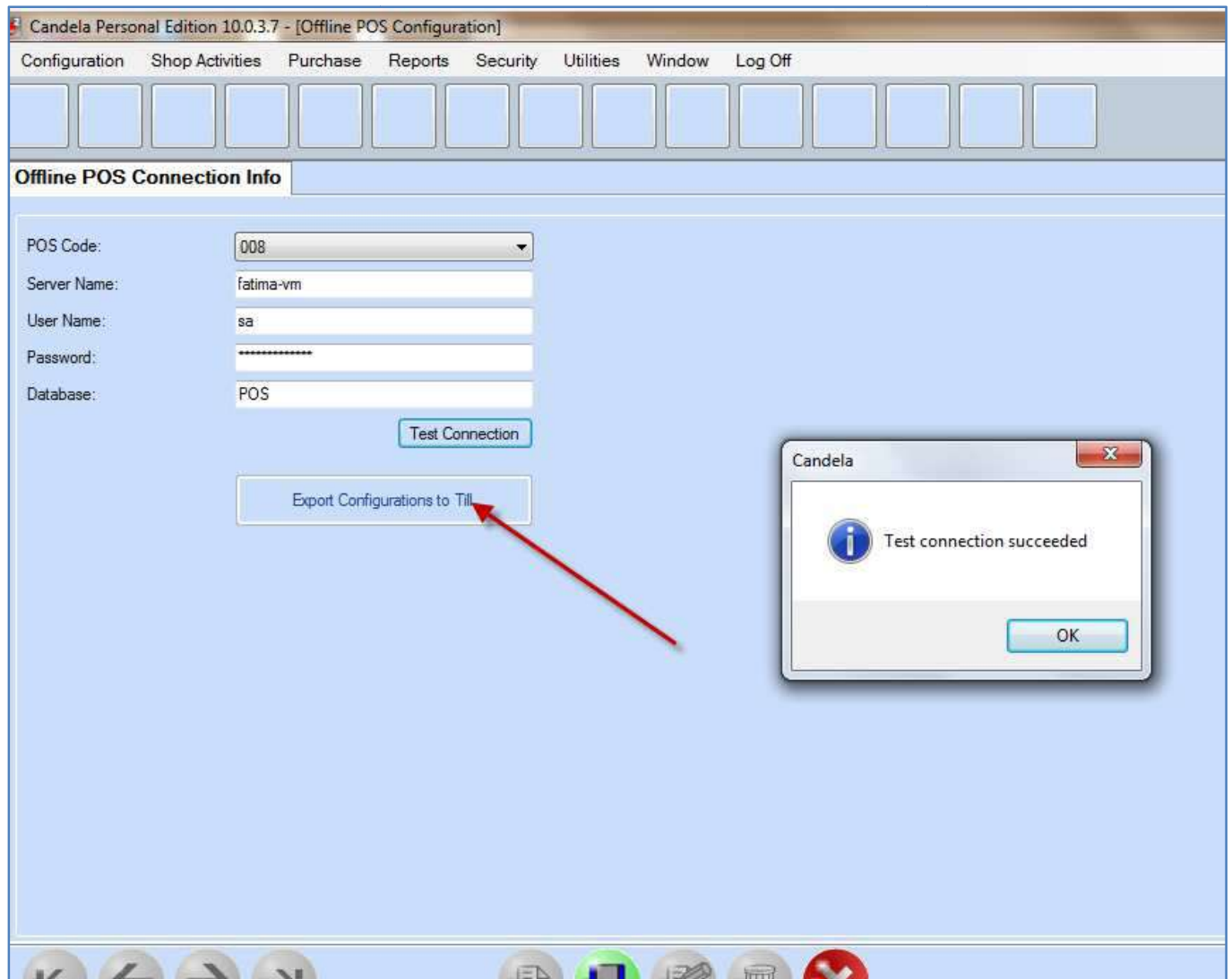
1. From the Server to the Offline till

- a. Login with shop user login
- b. Go to:

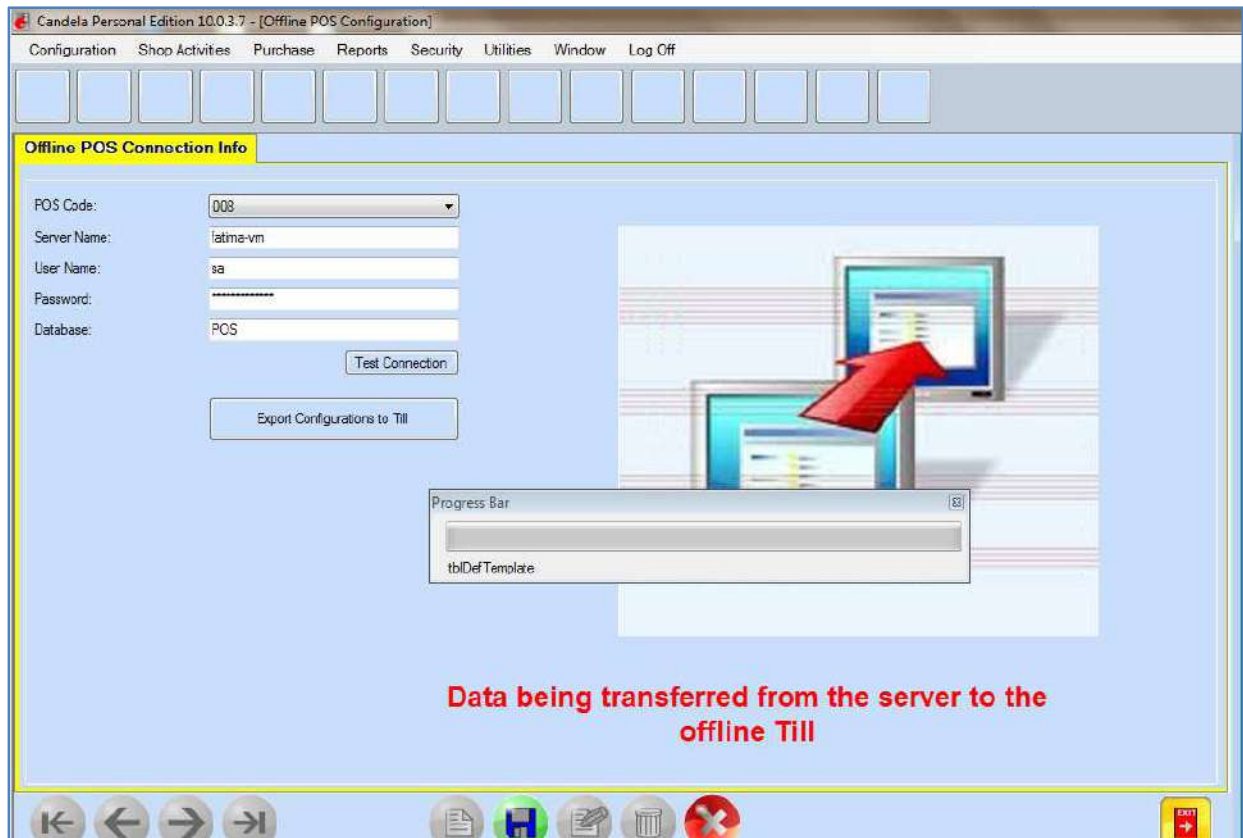
Utilities>Setup and Configuration>Offline POS Configuration



Now click Export Configurations to Till:



Note: If Test connection fails, then you need to seek technical assistance. There may be something wrong with the configuration.



As a result, all configurations carried out at the server will be transferred to the offline till. These configurations include:

- New products defined in the system
- Changes in product prices and discounts
- New customers defined in the system
- New sales persons defined in the system
- All types of credit cards defined in the system
- Group rights managed for sales shop users

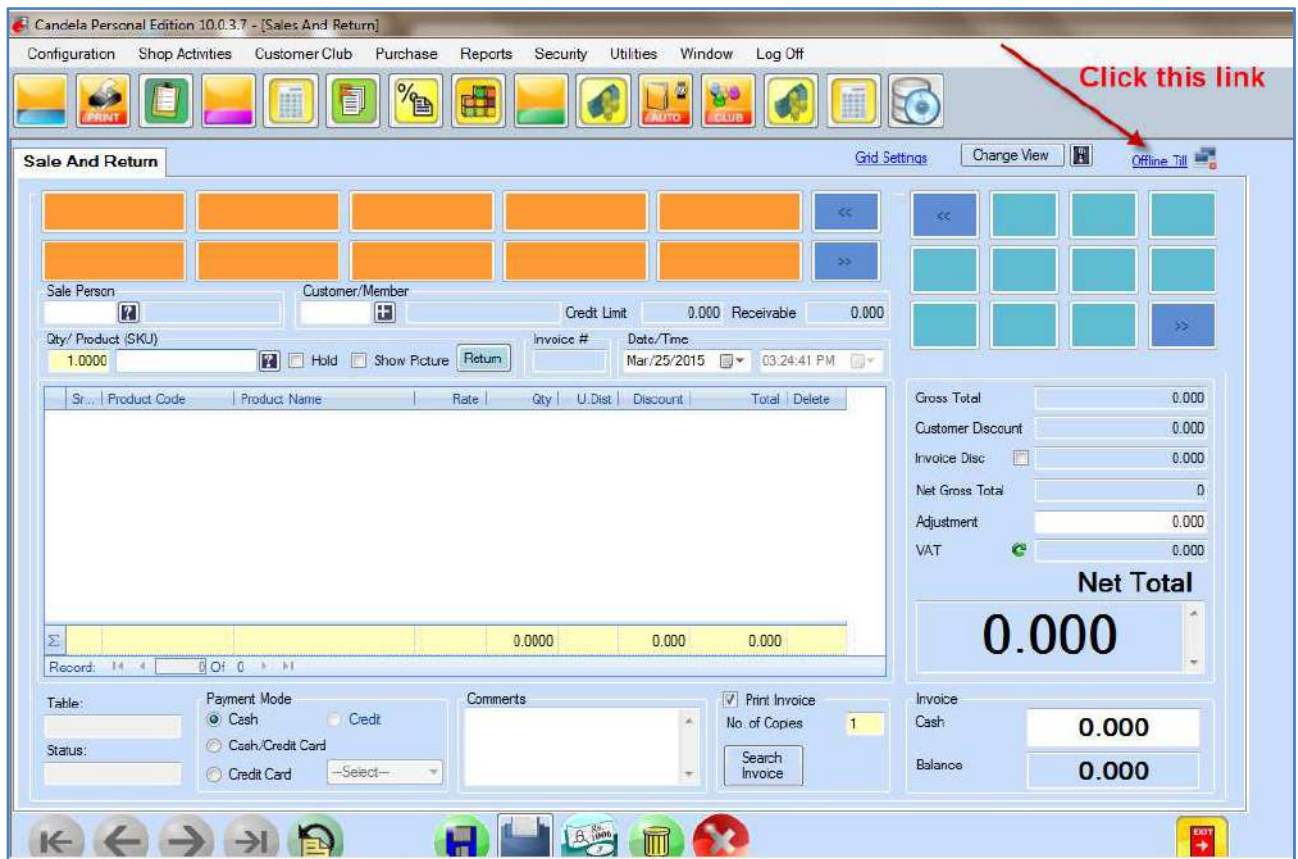
2. From Offline Till to the Server

The offline till can:

- a. Import all configurations from the Server
- b. Transfer all sales and walk-in customer data to the server
- c. Save POS closing at offline pos system

1. Log in with shop user login

2. Go to: **Shop Activities> Sales and Return > click Offline till link**



Candela Personal Edition 10.0.3.7 - [Configuration Transfer Utility]

Configuration Shop Activities Purchase Reports Security Utilities Window Log Off

Configuration Transfer Utility Sales Transfer History Configuration Transfer History System Event Log

Server Name: USMAN
Database: Restaurant

Last Transfers On:
Sale: 3/25/2015 2:37:34 PM
Configuration: 3/25/2015 1:00:19 PM

Transfer schedule in minutes: 1
Change Delete

Test Connection **Click**

Import Configuration Data
Export Sales Data
Resolve Pending Sessions

Candela
Test connection succeeded.
OK

You can also open this screen by going to:
Utilities>General Utilities>Configure Transfer Utility

Navigation icons: Home, Back, Forward, Refresh, Print, Save, Exit

Candela Personal Edition 10.0.3.7 - [Configuration Transfer Utility]

Configuration Shop Activities Purchase Reports Security Utilities Window Log Off

Configuration Transfer Utility Sales Transfer History Configuration Transfer History System Event Log

Server Name: USMAN
Database: Restaurant

Last Transfers On:
Sale: 3/25/2015 2:41:20 PM
Configuration: 3/25/2015 2:39:02 PM

Pending Sales: 2

Transfer schedule in minutes: 1

Change Delete

Test Connection

Import Configuration Data

Export Sales Data

Resolve Pending Sessions

When you click 'Test Connection' these three buttons will be enabled

You can import all configuration data from the server or export all sales data from the offline till to the server

Navigation icons: Home, Back, Forward, Print, Save, Delete, Refresh, Exit

Configuration Shop Activities Purchase Reports Security Utilities Window Log Off

Configuration Transfer Utility Sales Transfer History Configuration Transfer History System Event Log

Server Name: USMAN
 Database: Restaurant
 Last Transfers On:
 Sale: 3/25/2015 2:41:20 PM
 Configuration: 3/25/2015 2:39:02 PM
 Pending Sales: 2
 Transfer schedule in minutes: 1

Change Delete

Test Connection

Import Configuration Data

Export Sales Data

Resolve Pending Sessions

Offline Sales Transfer Schedule

Transfer sales after every 2 minute(s)

In this pop-up box enter time interval for sale transfer

For automatic transfer of sales, you can set the timer here

Configuration Shop Activities Purchase Reports Security Utilities Window Log Off

Configuration Transfer Utility Sales Transfer History Configuration Transfer History System Event Log

Server Name: USMAN
 Database: Restaurant
 Last Transfers On:
 Sale: 3/25/2015 2:41:20 PM
 Configuration: 3/25/2015 2:39:02 PM
 Pending Sales: 2
 No sales transfer schedule found

Add New

Test Connection

Import Configuration Data

Export Sales Data

Resolve Pending Sessions

after setting the timer, restart Candela

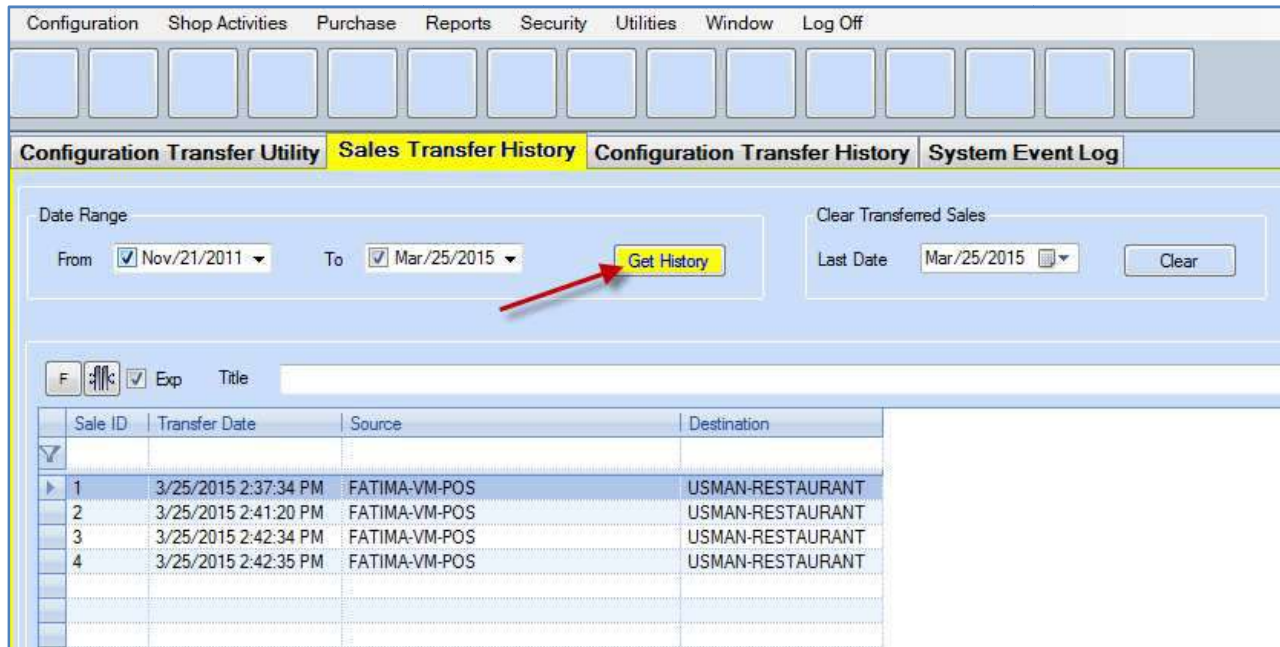
Candela

Please restart candela.

OK

It is recommended that you transfer sales to the server at regular intervals. At least all sales should be transferred before POS closing.

To check the details of transferred sales from the till to the server, click the tab ‘Sales Transfer History’:



Configuration Transfer Utility **Sales Transfer History** Configuration Transfer History System Event Log

Date Range
 From Nov/21/2011 To Mar/25/2015

Clear Transferred Sales
 Last Date

Sale ID	Transfer Date	Source	Destination
1	3/25/2015 2:37:34 PM	FATIMA-VM-POS	USMAN-RESTAURANT
2	3/25/2015 2:41:20 PM	FATIMA-VM-POS	USMAN-RESTAURANT
3	3/25/2015 2:42:34 PM	FATIMA-VM-POS	USMAN-RESTAURANT
4	3/25/2015 2:42:35 PM	FATIMA-VM-POS	USMAN-RESTAURANT

You can also check the history (date and time) of all configurations transferred from the server to the offline till:

Candela Personal Edition 10.0.3.7 - [Configuration Transfer Utility]

Configuration Shop Activities Purchase Reports Security Utilities Window Log Off

Configuration Transfer Utility Sales Transfer History **Configuration Transfer History** System Event Log

Date Range

From Nov/21/2011 To Mar/25/2015 [Get History](#)

F Exp Title

Transfer Date	Source	Destination
3/25/2015 12:09:32 PM	USMAN-RESTAURANT	FATIMA-VM-POS
3/25/2015 12:11:42 PM	USMAN-RESTAURANT	FATIMA-VM-POS
3/25/2015 12:22:03 PM	USMAN-RESTAURANT	FATIMA-VM-POS
3/25/2015 12:32:46 PM	USMAN-RESTAURANT	FATIMA-VM-POS
3/25/2015 12:33:41 PM	USMAN-RESTAURANT	FATIMA-VM-POS
3/25/2015 1:00:19 PM	USMAN-RESTAURANT	FATIMA-VM-POS
3/25/2015 2:39:02 PM	USMAN-RESTAURANT	FATIMA-VM-POS