

B14. How to restore database using SQL Server 2005

Step 1: Open Up SQL Server Management Studio

First, navigate to **Start -> Programs -> Microsoft SQL Server 2005 -> SQL Server Management Studio Express**



Upon opening the program, you should be prompted with a **Connect to Server** box. Fill out the fields with your database information.



The **Server Name** field is the name of the Database Server. Usually it's filled up by the system

The **Authentication** field should be **SQL Server Authentication** by default.

The Login field is the username you have set up for the database during the installation.

The Password field is the password you have set up for the user.

Note: If it connects with **SQL Server Authentication** mode then go directly to **Step 3** otherwise go to **Step 2**

Step 2: Change SQL Authentication Mode

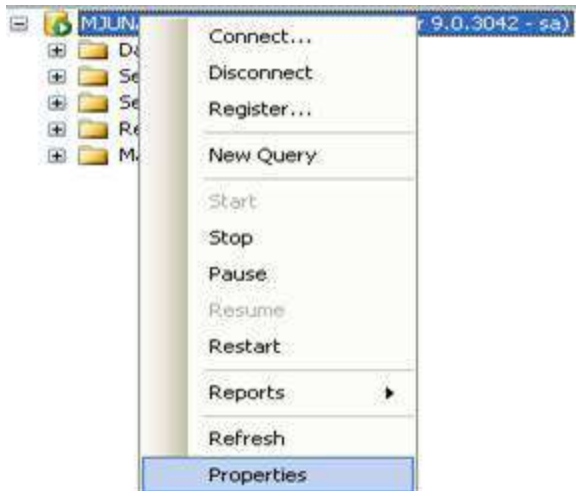
If the above mentioned options don't work then change the authentication field to **Windows Authentication** mode and press **connect** button.



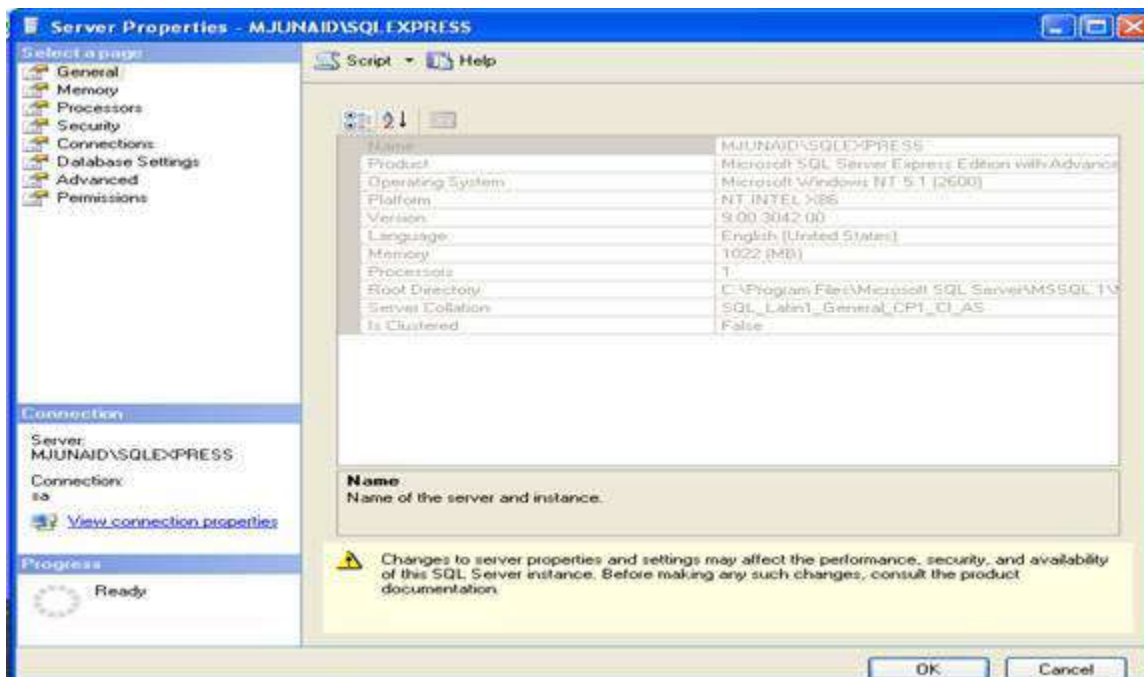
Upon connecting, you will see a window similar to the picture below. On the left, select/expand Databases and find your **Database** name.



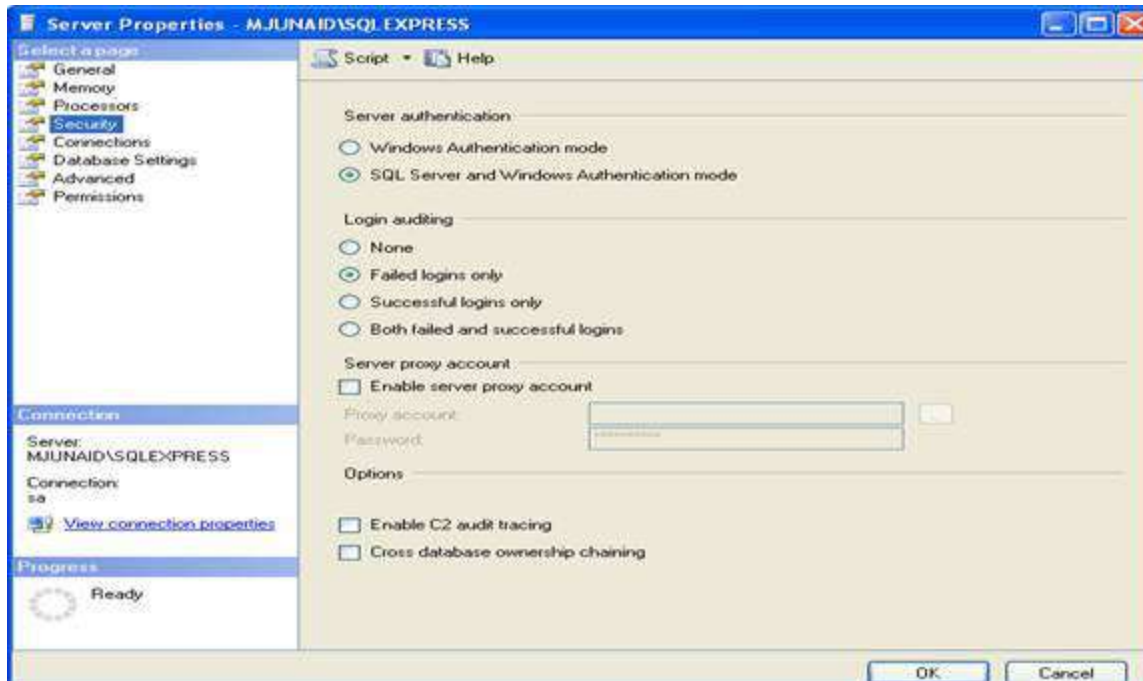
To configure the security settings right click on the Database server and go to **Properties** option



Server Properties window will be displayed as below



Go to the Security Page



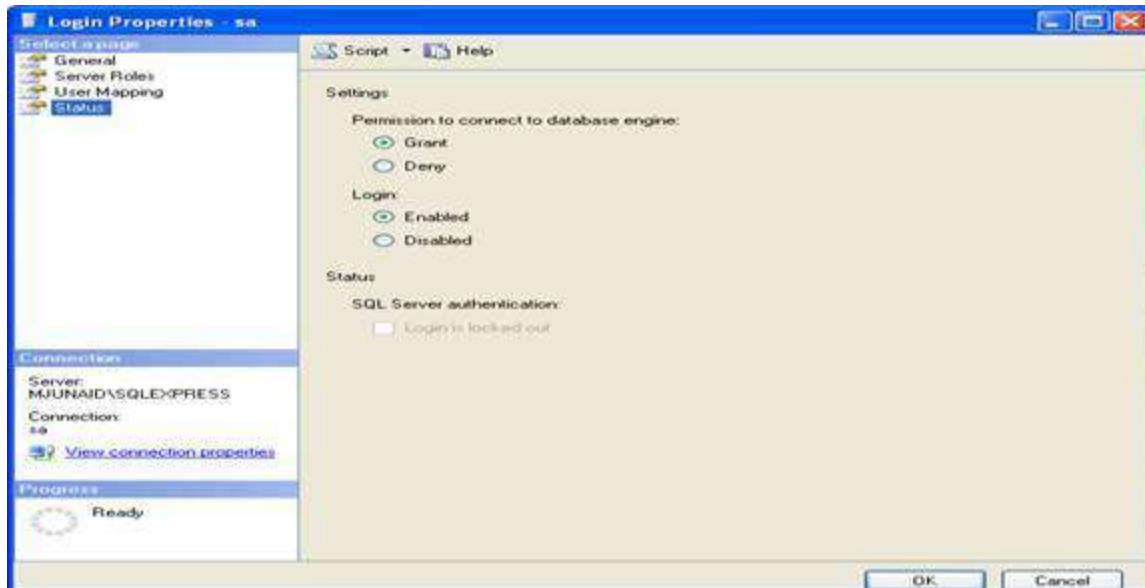
And change the **Server Authentication** mode to **SQL Server and Windows Authentication mode**

Expand the **Security** tab in the DB server options and then **Logins**

Right Click on the **sa** login and go to **Properties** window



Login Properties window will be displayed as shown in the image below

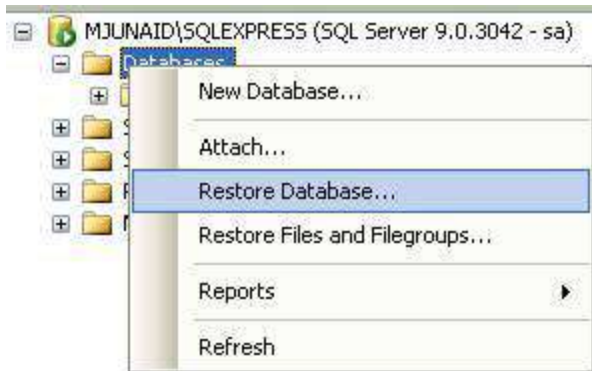


Go to **Status** page and check the **Enabled** option below the Login section.

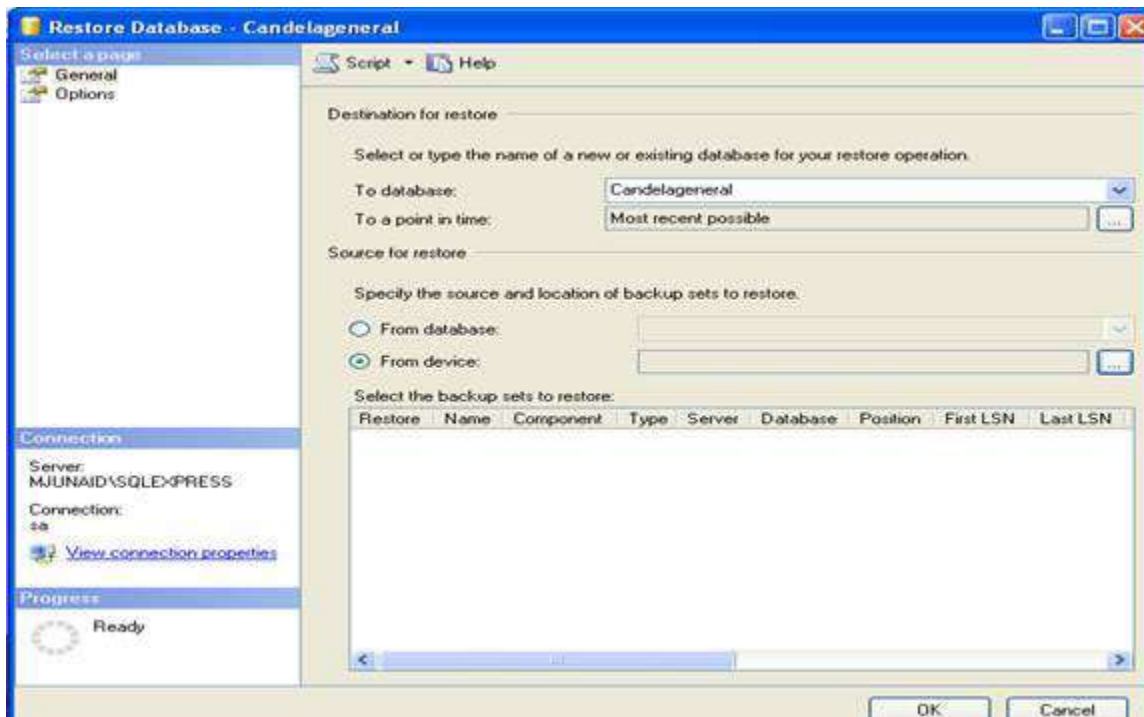
Open the management studio again and connect with **SQL Server Authentication mode**



Step 3: Restore Database

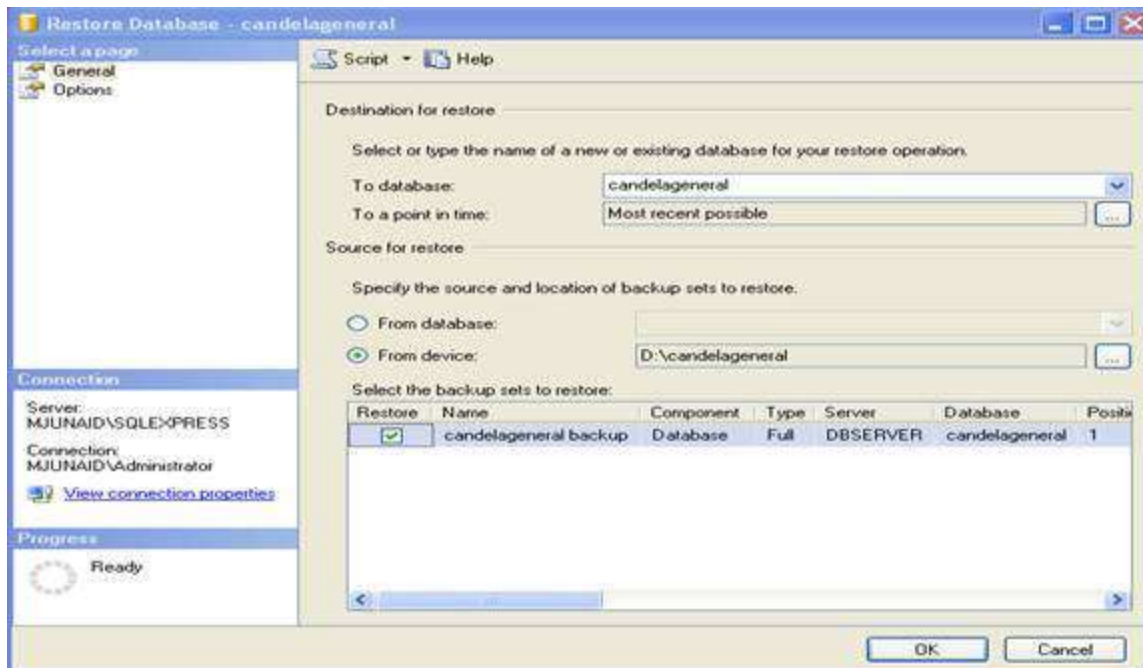


To restore the Database right click on the **Databases** option and select the **Restore Database** option following windows will be displayed



In the **To database:** option enter the new database name that you want to restore

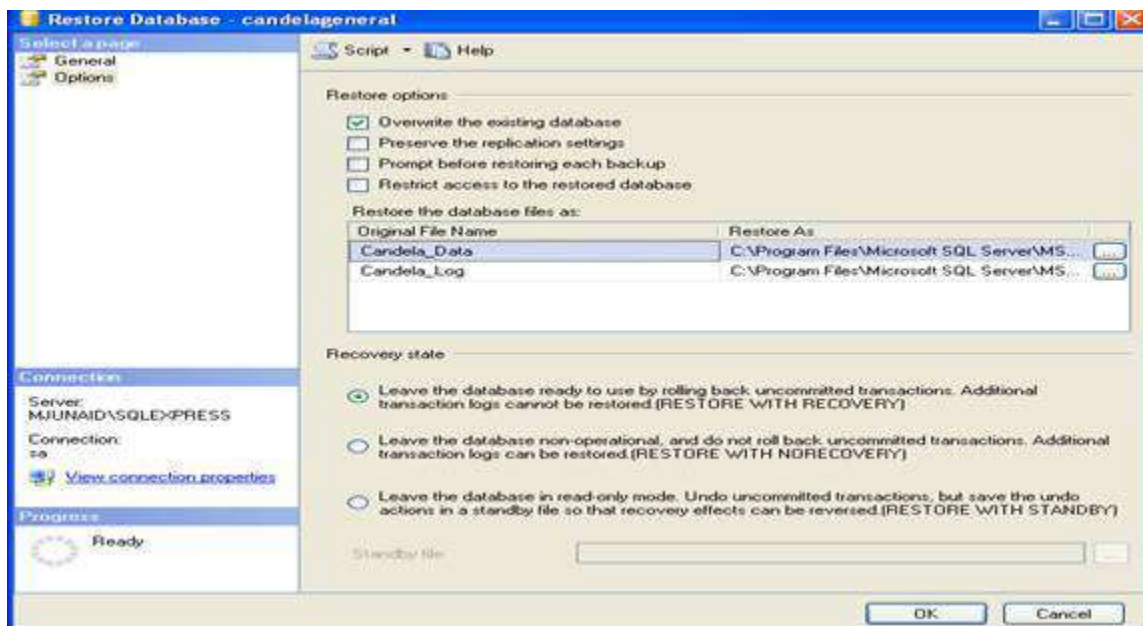
Select **From device** and click the small grey box on the right labeled A window will pop up, Click **Add** and browse to the location of your backup file



Brows the backup file sent by Lumensoft and load in the windows as shown above in the picture
Click **OK**.

Check the checkbox under the column Restore

Go to the Options (top-left)



Check **Overwrite the existing database**.

And then **OK** to restore the Data Base.

If this has completed with No Errors then you have successfully restored your database!

In case of any error message please confirm the path in the **Restore As** column in the above image for both Data and Log file

Default directory of the SQL server is

C:\Program Files\Microsoft SQL Server\MSSQL.1\MSSQL\Data\

After that there should be data file and log files names as given below for the candelageneral db

C:\Program Files\Microsoft SQL Server\MSSQL.1\MSSQL\Data

candelageneral.mdf

C:\Program Files\Microsoft SQL Server\MSSQL.1\MSSQL\Data

candelageneral_log.ldf