

Prepared by: HM Nadim
Manager Quality Assurance

This document will help you to create the replicated shop(s) of Candela. It's very simple. Just follow the steps mentioned below:

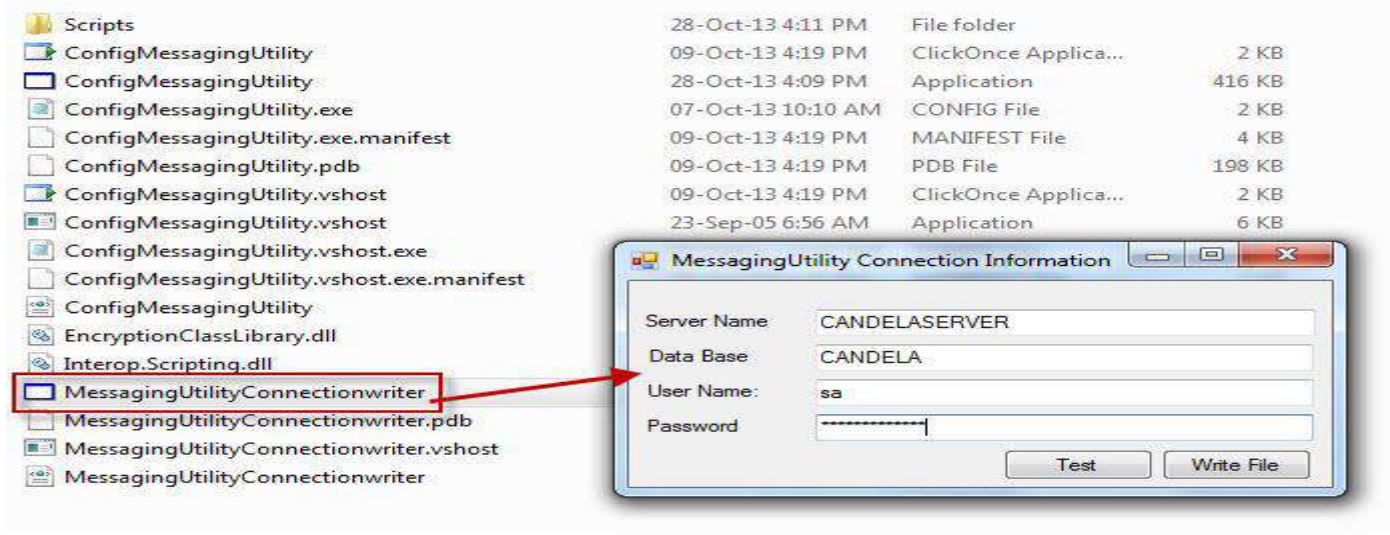
Step 1: Place following folder of Shop Utility Setup (Only Once at Server)

Note: This folder can be placed anywhere on the main Candela Server

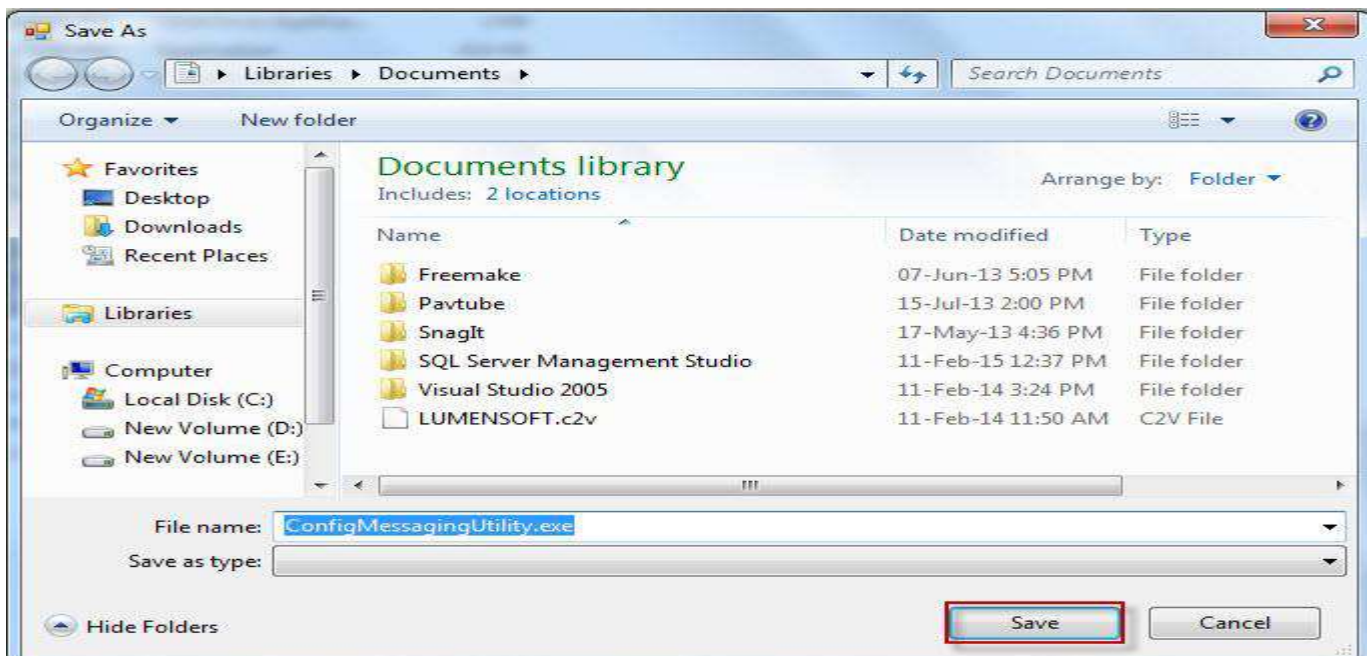
Name	Date modified	Type	Size
Scripts	28-Oct-13 4:11 PM	File folder	
ConfigMessagingUtility	09-Oct-13 4:19 PM	ClickOnce Applica...	2 KB
ConfigMessagingUtility	28-Oct-13 4:09 PM	Application	416 KB
ConfigMessagingUtility.exe	07-Oct-13 10:10 AM	CONFIG File	2 KB
ConfigMessagingUtility.exe.manifest	09-Oct-13 4:19 PM	MANIFEST File	4 KB
ConfigMessagingUtility.pdb	09-Oct-13 4:19 PM	PDB File	198 KB
ConfigMessagingUtility.vshost	09-Oct-13 4:19 PM	ClickOnce Applica...	2 KB
ConfigMessagingUtility.vshost	23-Sep-05 6:56 AM	Application	6 KB
ConfigMessagingUtility.vshost.exe	07-Oct-13 10:10 AM	CONFIG File	2 KB
ConfigMessagingUtility.vshost.exe.manifest	09-Oct-13 4:19 PM	MANIFEST File	4 KB
ConfigMessagingUtility	09-Oct-13 4:19 PM	XML Document	1 KB
EncryptionClassLibrary.dll	09-Apr-13 11:02 AM	Application extens...	44 KB
Interop.Scripting.dll	07-Oct-13 10:31 AM	Application extens...	32 KB
MessagingUtilityConnectionwriter	03-Dec-12 2:59 PM	Application	40 KB
MessagingUtilityConnectionwriter.pdb	03-Dec-12 2:59 PM	PDB File	74 KB
MessagingUtilityConnectionwriter.vshost	23-Sep-05 6:56 AM	Application	6 KB
MessagingUtilityConnectionwriter	03-Dec-12 2:59 PM	XML Document	1 KB

Step 2: Write the connection using the following utility (Only Once at Server)

Double click the exe "MessagingUtilityConnectionWriter" highlighted below, system will open a popup screen and then you mention the information of your Candela Server and click on "**Test**" button. System will display a message that "**Test Connection Succeeded**".



Then click on "**Write File**" button, system will show the following screen and then you go to the path where you have placed the above folder and then click on "**Save**" button.



Step 3: Install the shop utility release (At Server only)

Double click the Shop Utility Release (following image is the shop utility), system will show a popup screen.



By clicking “**Next**” button, system will ask the path where you want to install this release. Select the path of the above folder, and then click on “**Next**” button, system will install shop utility. You will not need to install shop utility release every time depending upon the release version of Candela. If you visit LumenSoft’s website and go to this page (<http://lumensoft.biz/index.php/downloads/download-releases#.VOQfA0qDrDc>) then you will find a note with every shop utility that tells you which shop utility is compatible with which Candela release(s)

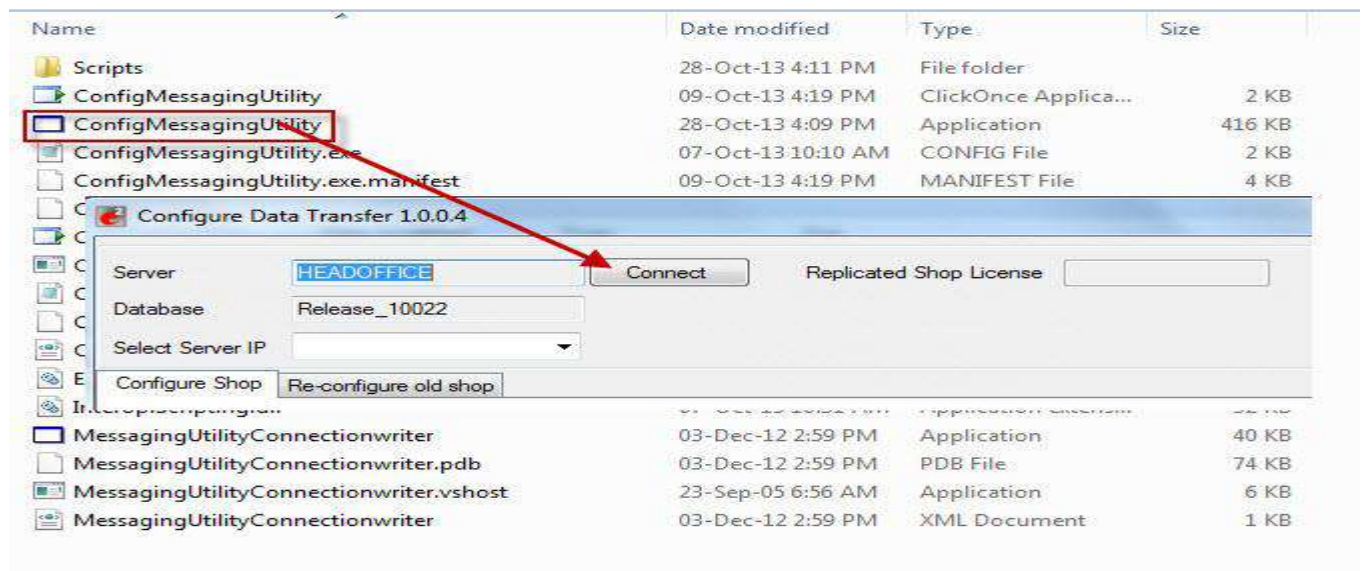
Step 4: Restore Blank Database at Shop Server

Connect to the shop’s SQL Server which you want to make replicated and restore the blank database of the same release version which is running on Candela Server (say 10035)

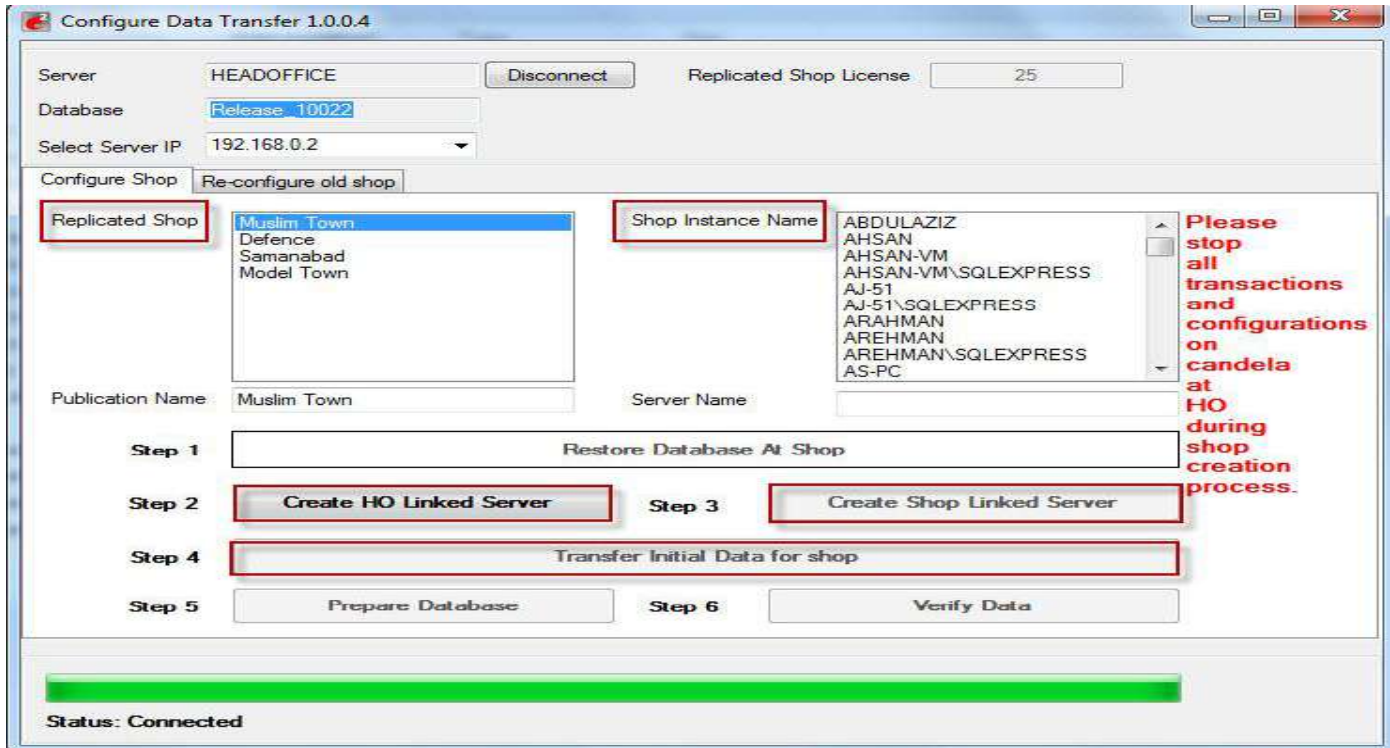
Note: Database name of Candela Server and Shop Server should be same

Step 5: Run the shop utility exe (At Candela Server)

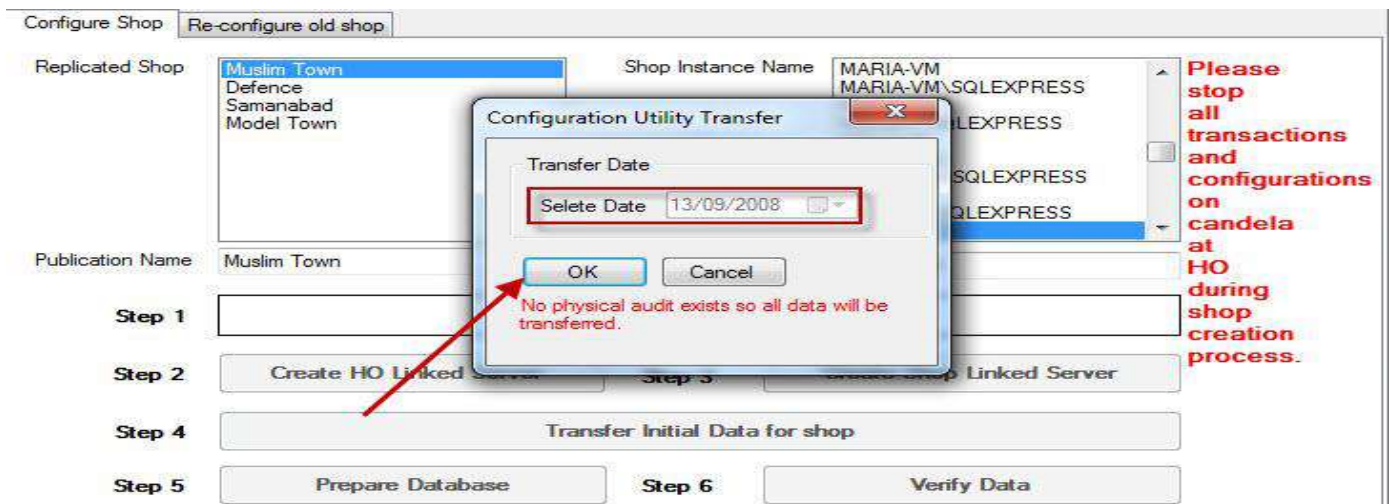
Go to folder of Shop utility creation and double click the shop utility exe, system will open a new popup screen then click on “**Connect**” button as shown in the following image



After clicking on “**Connect**” button, system will show a list of all the non-replicated shops as shown in the following image:



Select the shop from the list you want to make replicated and then select the related shop’s SQL Server from right box of “**Shop Instance Name**” and then click on Step 2 i.e. “**Create HO Linked Server**”. System will display a successful message and enables the Step 3 button i.e. “**Create Shop Linked Server**”. Click Step 3 button and after successful execution, system will enable the Step 4 button i.e. “**Transfer Initial Data for Shop**”. On clicking Step 4 button, system will show the following popup:



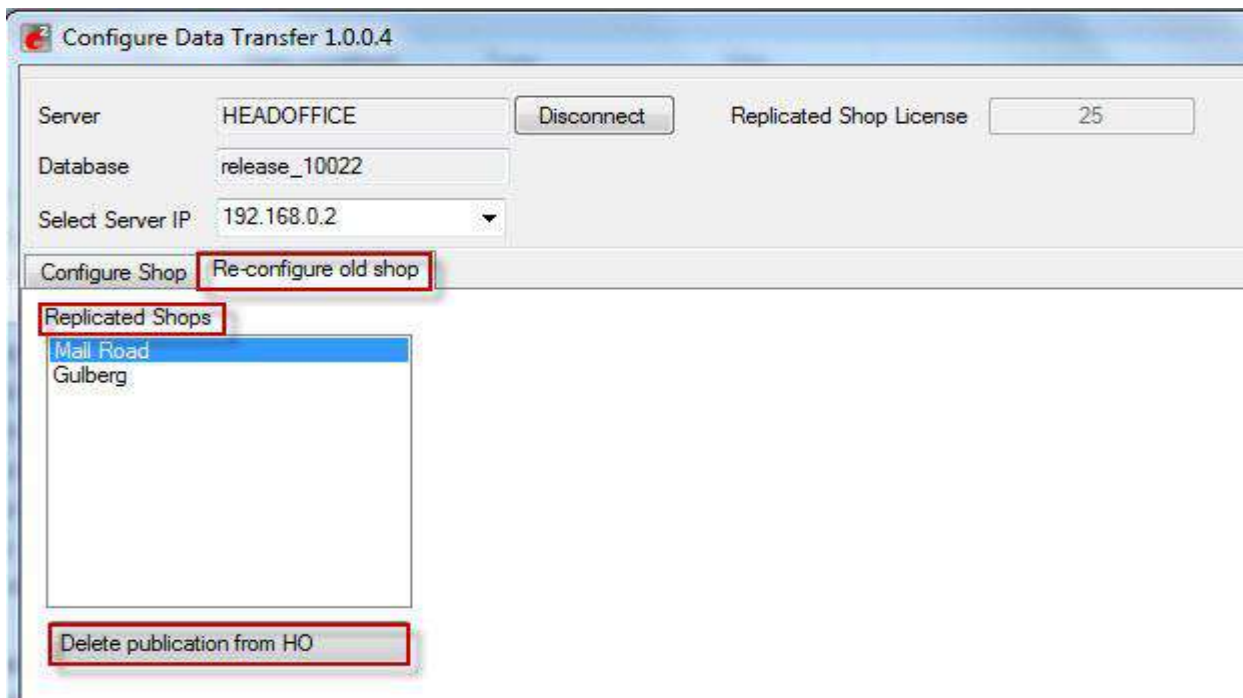
If no physical audit exists at that particular shop then date field will be disabled and system will transfer all the data to shop. If any physical audit exists at shop then date field will be enabled and you have to select the date from where you want to send data from Candela Server to Shop Server. Then click on “**OK**” button, system will start processing to transfer the data from Candela Server to Shop Server. It may take time depending upon the data and internet speed.

After the execution of this step, system will enable the Step 5 button i.e. “**Prepare Database**”. Click this button and system will perform the action and then system will enable the last button i.e. Step 6 (**Verify Data**). On clicking this button, system will match the no. of records at Candela Server and Shop Server. If all records are same at both sides then it means your shop has been created successfully.

After executing all the steps, your shop will not be visible on this screen and it will be moved to second tab i.e. “**Re-Configure Old Shop**”

Step 6: Re-Create the replicated Shop

Sometimes, an issue occurs to an existing replicated shop. For example, you have to install windows on shop server or your shop crashes then in this case; you have to re-configure the replicated shop. For this, just click on “**Connect**” button on the above image and go to “**Re-Configure Old Shop**” tab.



System will show the list of all replicated shops. Select the shop from the list which you want to re-create and click on the “**Delete publication from HO**” button, system will remove that shop from the list and then that shop will appear on “**Configure Shop**” tab and then repeat all the steps mentioned above.