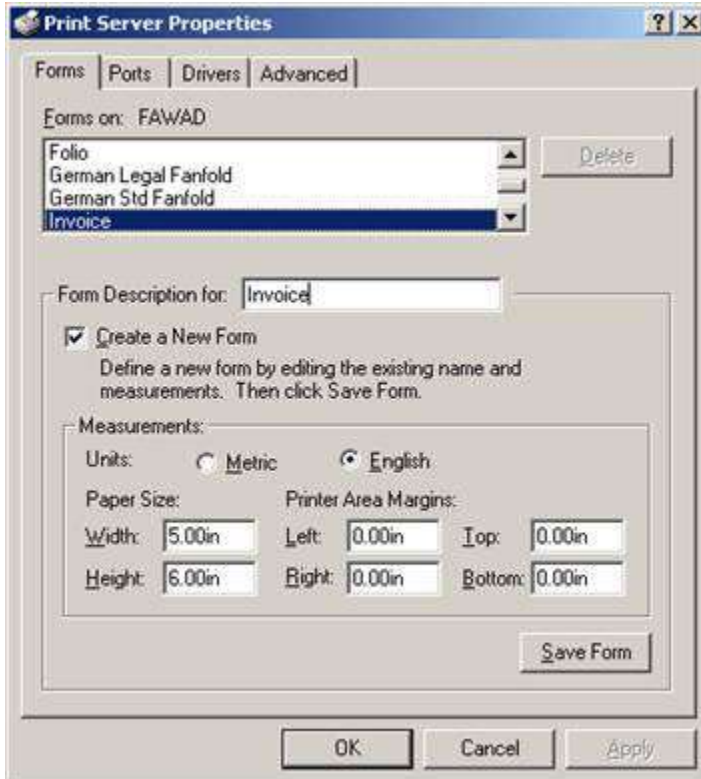
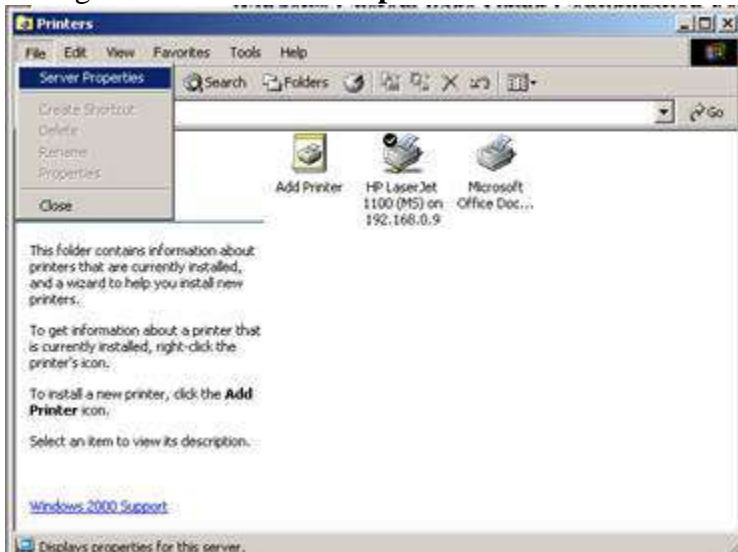


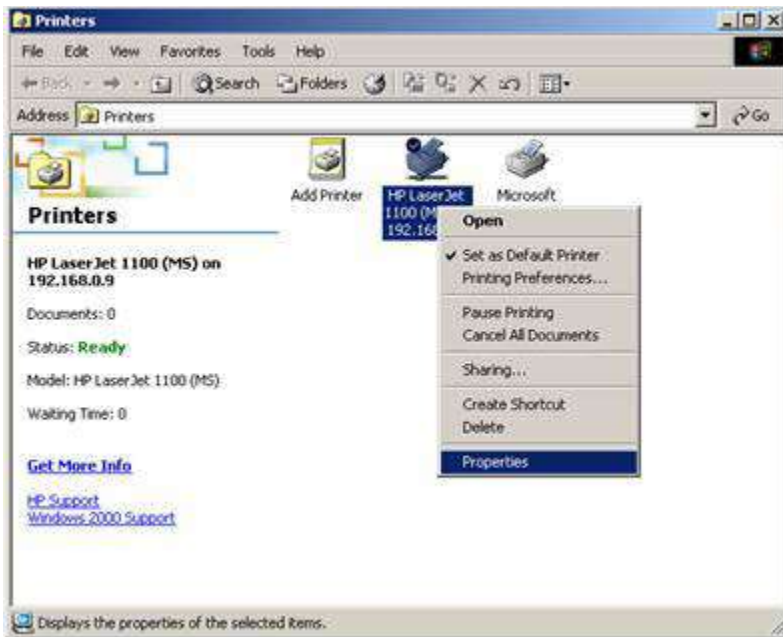
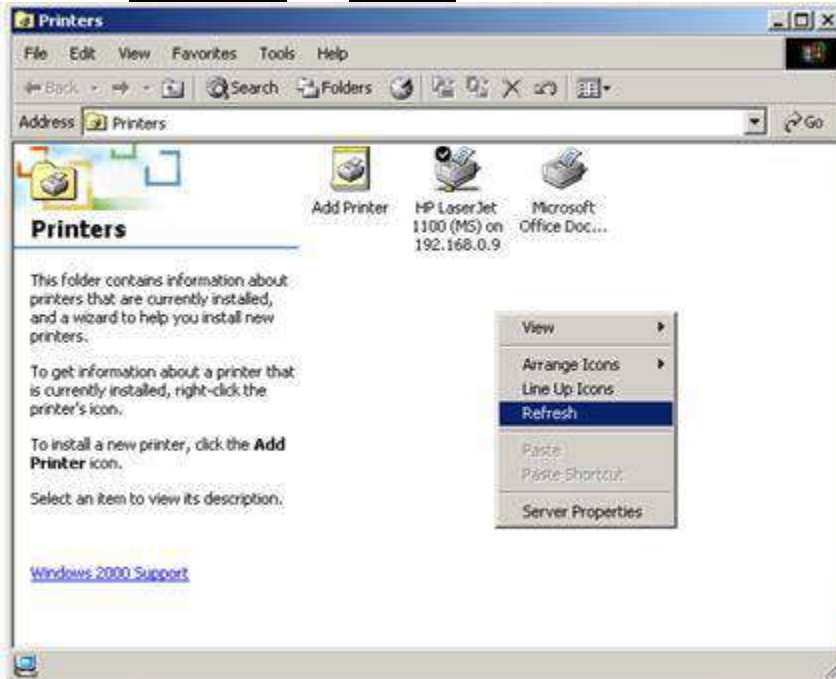
## F02. Windows Custom Page Size Setting for Printer

To add custom paper size in windows printer settings, this document will guide through the basic steps...

1. Click on **Start à Settings à Printers**
2. Now go to **File à Server Properties**

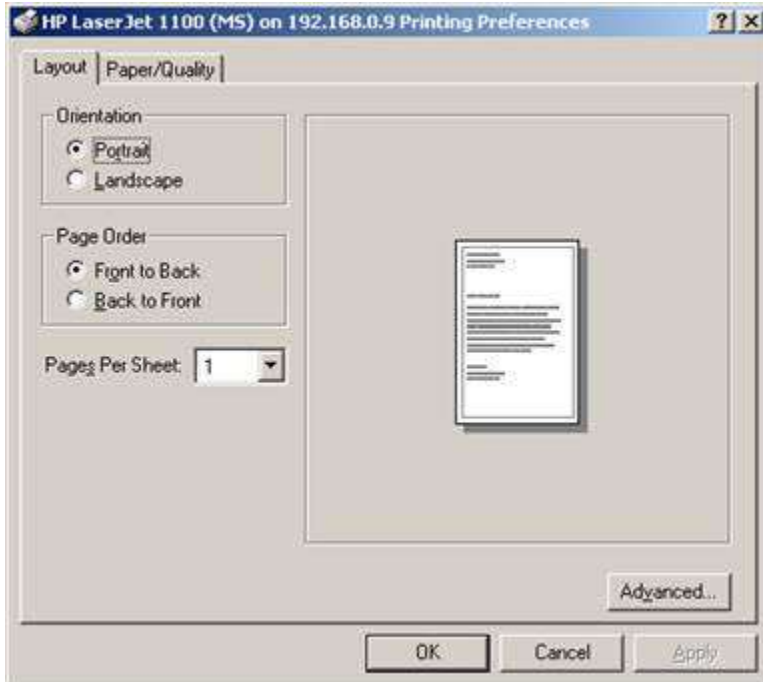
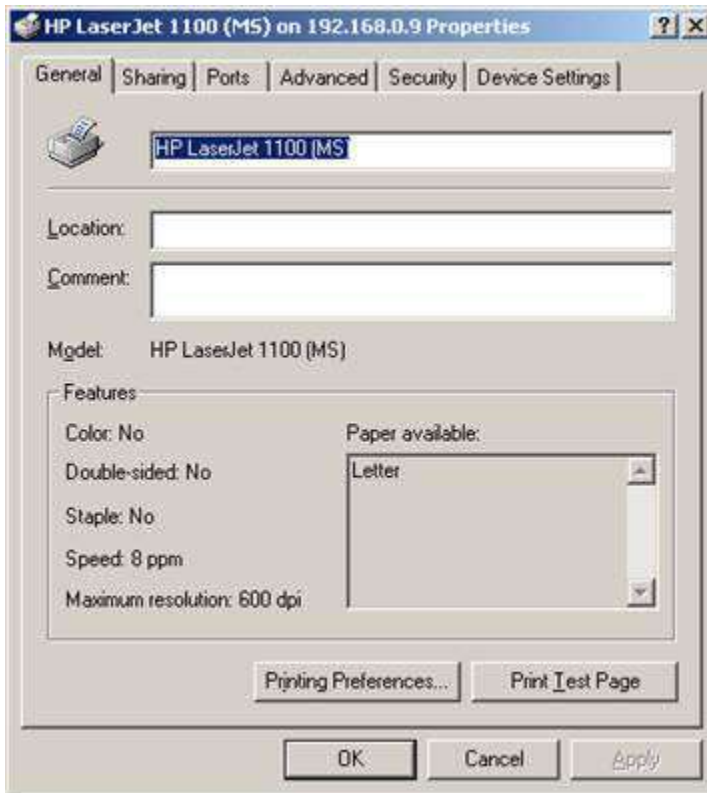


3. Click on Save Form
4. After that **Right Click** and **Refresh**

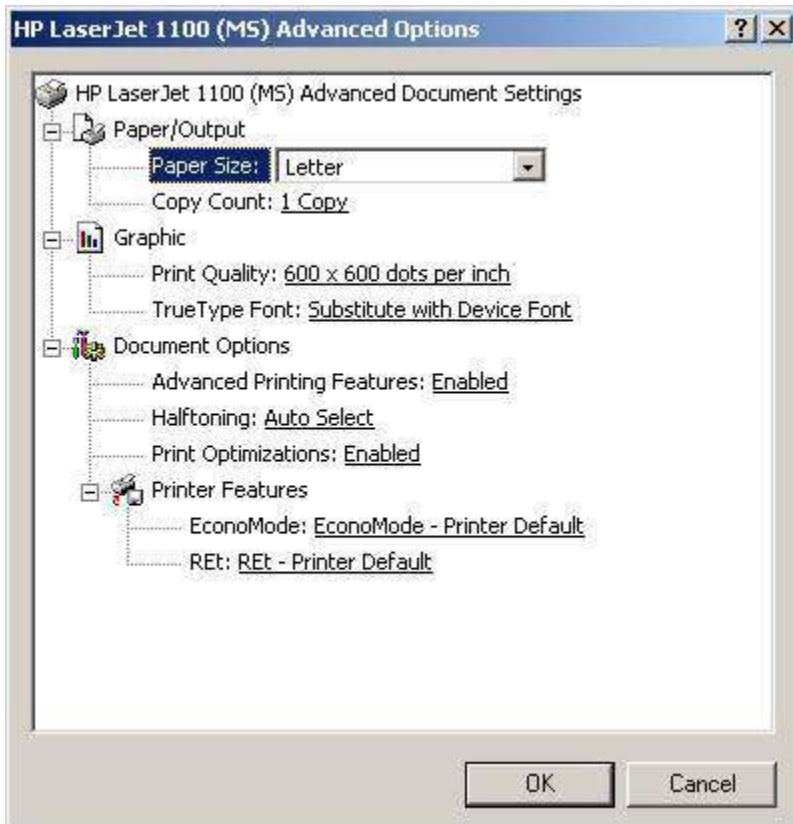


5. Right click on Printer and then click on Properties

6. Click on **Printer Preferences** button

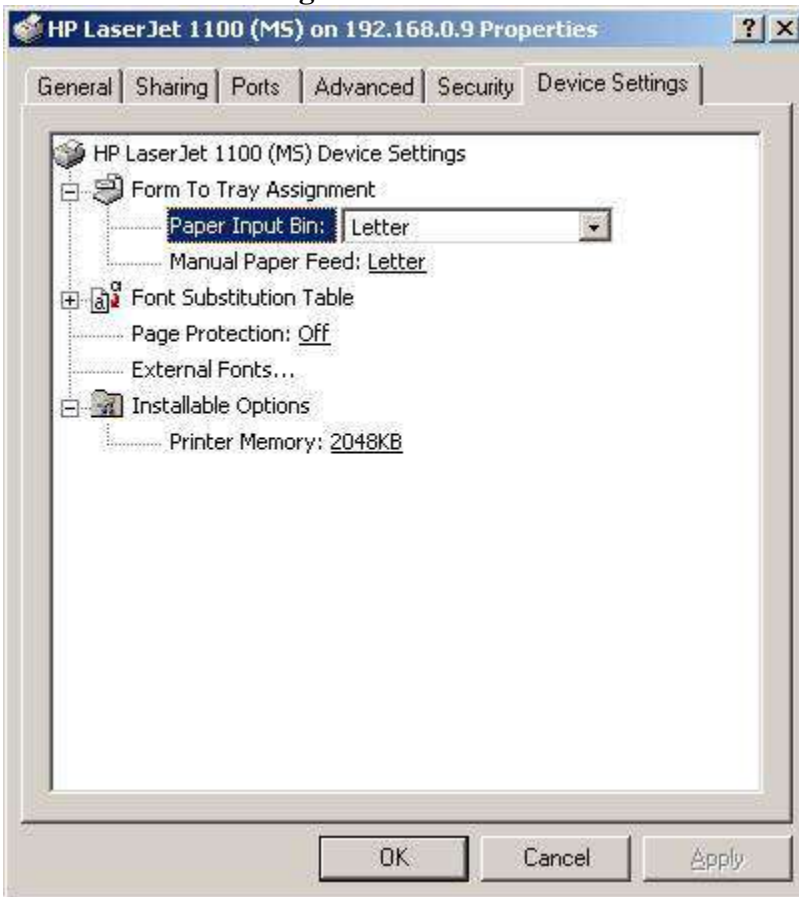


7. Click on **Advance...** button



8. Change the Paper size and select “**Invoice**” from list and click OK

9. Click on **Device Settings** Tab



10. Replace Letter with **“Invoice”** in both **Paper Input Bin** and Manual Paper Feed  
11. Click **OK**